



MYTHS AND FACTS

About Affordable & High Density

HOUSING

A Report by

California Planning Roundtable
California Department of Housing & Community Development

IN THE PAST 30 YEARS, CALIFORNIA'S HOUSING PRICES HAVE STEADILY OUTPACED ITS RESIDENTS' INCOMES. Housing production hasn't kept up with job and household growth within the State.¹ The location and type of new housing does not meet the needs of many new California households. As a result, only one in five households can afford a typical home, overcrowding doubled in the 1990's, and more than three million California households pay more than they can afford for their housing.²

Meanwhile, the federal government has dramatically cut back programs that used to help local governments accommodate new growth. Voter-imposed property tax and spending freezes have further constrained local governments from responding effectively to new growth. And affordable housing development, while still funded in part by the federal government, requires a larger local commitment than ever before.

Against this backdrop, it should surprise no one that many communities no longer accept population growth with open arms. When anyone proposes the development of affordable or multifamily housing, ambivalence about growth often shifts to hostility. Hostility feeds and strengthens certain myths, and deep emotional perceptions of how the world works. *Myths—important sources of meaning in all societies—provide shared rationales for community members to behave in common ways, having a strong moral component, with clear lines between right and wrong.* Although myths are sometimes positive, they can also serve as shields for deeper and uglier motivations: racism, fear of outsiders, and/or greed. When people argue against new high-density and affordable housing, often myths are used to convince decision-makers that the new development and its residents don't belong there. Traffic will be too heavy; schools will become

overcrowded; buildings will clash with existing neighborhoods; people won't fit in; and maybe even a criminal element.

Opponents often believe these myths. But it's essential to counter these myths with facts. California desperately needs new affordable housing to reverse recent increases in overcrowding and overpayment. We also need new high-density housing to support economic stability and prosperity. We need housing to accommodate new workers and their families and to economize on infrastructure costs, while preserving open space and reducing the distance between homes and jobs.

Fortunately, the facts of California's recent experiences with high-density and affordable housing often contradict the myths. We can now begin to rely on this recent experience to reassure concerned residents that the myths don't have to come true.

Myth #1

High-density housing is affordable housing; affordable housing is high-density housing.

Fact #1

Not all high density housing is affordable to low-income families.

households will continue to rent single-family homes because they offer more space in low-density neighborhoods.

For the most part, of course, low-density neighborhoods offer more expensive housing than high-density areas. Detached homes cost much more than most apartments and condominiums. Among new units, the difference is even more striking; new high-density units are much more likely to be affordable than new single-family units.

Density is not always enough, however. To ensure affordability, local governments must intervene with programs and additional concessions if the new high-density units are also to be affordable. For a list of resources on affordable housing techniques, see Resources: *Making Housing More Affordable*, at the end of this report.

This myth expresses an essential truth: more units per acre mean lower land costs per unit, especially if local governments allow builders meaningful density bonuses; smaller units cost less to build than larger ones. To encourage housing affordability, California cities do need to promote higher densities.

But we also know from experience and observation that not all high-density housing is affordable to low-income families. San Francisco's Nob and Telegraph Hills, Los Angeles' Wilshire Corridor, and high-rises in

downtown San Diego are all examples of upper-income areas where housing densities are quite high. Similarly, most Californians know that low-density neighborhoods often accommodate people of modest means. The residents of these neighborhoods often moved in shortly after the homes were built (several decades ago)—and before the huge escalation in California's home values that began in the early 1970's. With assistance, many families with limited incomes will continue to buy homes in these neighborhoods. Many other low-income

Myth #2

High-density and affordable housing will cause too much traffic.

Fact #2

People who live in affordable housing own fewer cars and drive less.

In many high-density neighborhoods, and in most neighborhoods with a mix of housing types, traffic isn't a big problem.

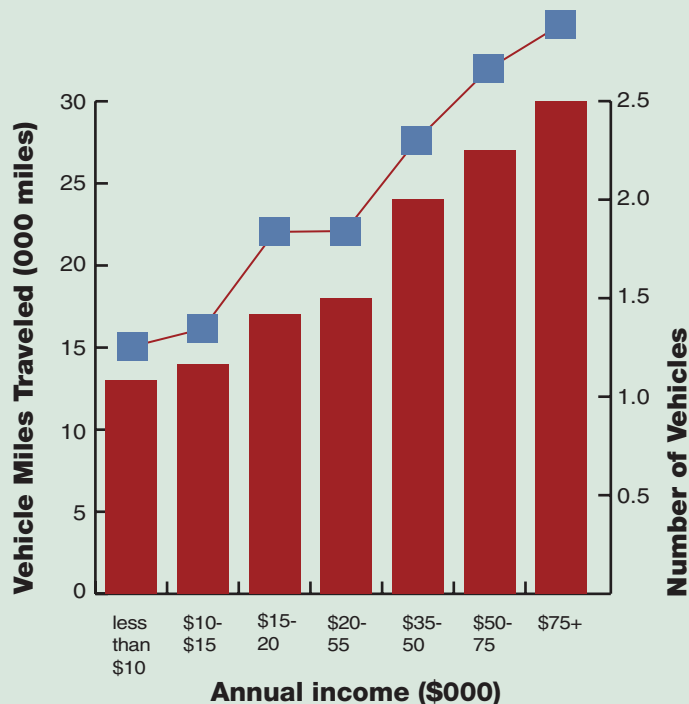
In California's six largest metropolitan areas, two-thirds of renters and over three-fourths of the households living below the poverty line own no vehicles or only one car, compared to 54 percent of all households and 44 percent of homeowner households.³ With lower car ownership rates come fewer trips, and fewer single occupant auto commutes. According to the National Personal Transportation Survey in 1995, low-income households make 40 percent fewer trips per household than other households. Recent traffic growth owes much to existing development.

In many high-density neighborhoods, and in most neighborhoods with a mix of housing types, traffic isn't a big problem. Fewer auto trips occur in higher-density areas. In a neighborhood of 15 homes to the acre, one-third fewer auto trips occur, compared to a standard suburban tract.⁴ A 1990 survey by the Sierra Club's Transportation Committee found that for every doubling of neighborhood density, vehicle miles traveled are reduced by 20 to 30 percent.

Car ownership rates are less in higher density areas. According to recent American Housing Survey data, multifamily developments have lower car ownership rates than single-family home tracts.

To encourage housing affordability, California cities need to promote higher densities.

Low-income households own fewer cars, drive less



Source: U.S. Energy Information Administration, Residential Transportation Energy Consumption Survey, Household Vehicles Energy Consumption, 1994

High-density housing can encourage nearby retail development, along with ease of walking and transit use. Mixing housing with commercial development is ever more crucial for traffic control, since non-work trips constitute the largest number of trips.

Over three-fourths of trips in Southern California are non-work trips. With high-density

housing, stores serving neighborhood residents move in, allowing residents to walk to buy groceries or to the dry cleaner instead of driving.

Transit connections also become more common when neighborhood density increases, as transit is only cost-effective at densities above eight or 10 units per acre.⁵

Myth #3

High-density development strains public services and infrastructure.

Fact #3

Compact development offers greater efficiency in use of public services and infrastructure.

Librarians, sheriffs' deputies, nurses, fire fighters, and many other vital members of our communities all need affordable housing.

Higher-density residential development requires less extensive infrastructure networks than does sprawl. California developers must usually pay for sufficient infrastructure capacity to serve their own projects. When communities cannot take advantage economies of scale in providing infrastructure, extension costs rise. High-density housing helps provide economies of scale both in trunk lines and in treatment plants. The cost savings can be passed on to new residents, and the smaller debt load can help ensure fiscal stability throughout the community.

Infill development can sometimes take advantage of unused capacity in public services and infrastructure. Communities can save taxpayers and new residents money when housing construction is allowed in areas where infrastructure and service capacity has already been paid for and is underutilized. Infill development can also make use of a transit and provide better access to services, while improving economic viability.

Higher-density infill residential development can translate to higher retail sales. By approving new high-density development in infill locations, communities can revitalize stagnant

commercial districts and increase taxable sales—the primary source of revenue in most California jurisdictions.

According to the American Housing Survey, the development of single-family homes is much more likely to cause strain on local schools than high-density development. In most cases, a single-family home can have two to three times the numbers of school aged children per household.⁶

Myth #4

People who live in high-density and affordable housing won't fit into my neighborhood.

Fact #4

People who need affordable housing already live and work in your community.

spouse and a child, the family would be a very low-income household. A starting air-traffic controller in San Diego County, with income barely higher than \$31,000 a year, would also qualify for affordable housing. Librarians, sheriffs' deputies, nurses, fire fighters, and many other vital members of our communities all need affordable housing.

People motivated by these concerns may just need to “meet” the residents of high-density and affordable housing. Residents often have been long time members of the community, and will continue to make contributions to their neighborhoods. For a list of resources that can introduce people to those who live in high-density and affordable housing, see Resources: *Meeting the Residents of Affordable Housing*, at the end of this report.

According to government definitions of affordable housing, families should devote no more than 30% of their income to rent or mortgage payments and utilities. Affordable housing often means housing whose residents don't pay too large a share of their incomes on rent or a mortgage.

Households earning lower incomes can have a variety of occupational and educational backgrounds. Families earning less

than four-fifths (80%) of the area's median income are officially lower-income households; families earning less than half of the median are known as very low-income households. For example, a starting elementary or high-school teacher in Mountain View (Santa Clara County), with a gross monthly income of around \$3,200, can afford to pay \$960 a month in rent, which qualifies as low-income if the teacher lives alone; if the salary must support a

Myth #5

Affordable housing reduces property values.

Fact #5

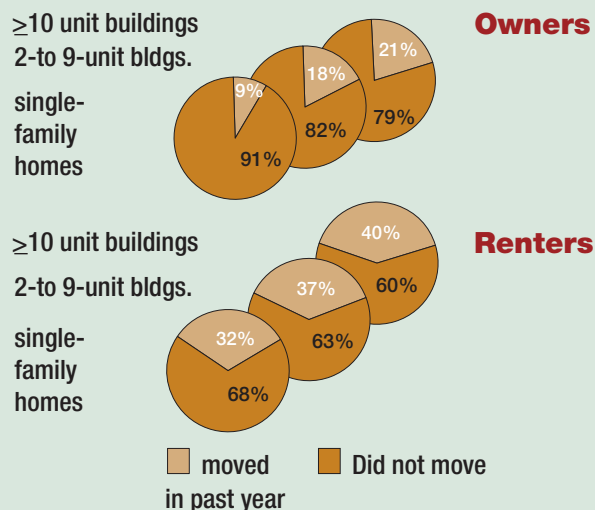
No study in California has ever shown that affordable housing developments reduce property values.⁷

Architectural standards and adequate maintenance also strongly influence property values

Many studies have been done. The truth is the single most significant factor affecting property values is the pre-existing value of the land in a given community or area. This in turn is based on supply and demand, proximity to major urban centers, nearby attractions (beachfront property, panoramic views), any negative factors such as environmental contaminants, and availability of adequate infrastructure and services.

Architectural standards and adequate maintenance also strongly influence property values, particularly as they apply to affordable rental properties. Properly maintained affordable housing developments, designed and built with sensitivity to the architectural and aesthetic standards desired by the community, may even increase property values.⁸

Tenure much more important than density in recent moves



The majority of both renters and homeowners in California metropolitan areas move less than once a year. Homeowners move less often than renters, but even renters move seldom enough to form long-term ties to neighbors.

* Source: U.S. Dept. of HUD, American Housing Surveys for San Francisco-Oakland, San Jose, Los Angeles-Long Beach, San Diego, Riverside-San Bernardino, and Anaheim-Santa Ana.

Myth #6

Residents of affordable housing move too often to be stable community members.

Fact #6

When rents are guaranteed to remain stable, tenants move less often.

Affordable housing tenants invest in a neighborhood and community just as much as any other resident

According to San Francisco's BRIDGE Housing, annual turnover in their affordable housing projects is less than 10 percent annually. This turnover rate is approximately the same as most single-family homeowners, around 10

percent, and much less than market-rate renters.

Affordable housing tenants invest in a neighborhood and community just as much as any other resident. Affordable housing tenants include families with school

age children, where the mother and father attend PTA meetings, and spend their spare time enjoying parks and other community facilities. These families and other affordable housing tenants are concerned for the public's health and safety just like other residents of the community.

Myth #7

High-density and affordable housing undermine community character.

Fact #7

New affordable and high-density housing can always be designed to fit into existing communities.

Density, as measured in units per acre, can be a deceiving measurement, but new housing at between 20 and 50 units per acre can be designed to fit in most California communities. The best way to convince people of this is to show them how well new housing can fit into their neighborhoods. see Resources: *Increasing housing densities*, at the end of this part, for a list of slide shows and videos.

Communities can also achieve higher densities by filling in the existing urban fabric with second units, duplexes, and conversion of outmoded or abandoned commercial

buildings. Local governments most often encourage infill by reducing regulations and restrictions.

New affordable housing differs little or not at all from any other development. When BRIDGE Housing opened its affordable *Pickleweed* housing development in upscale Mill Valley, potential buyers for neighboring condominiums mistook *Pickleweed* for the market-rate project. And when Habitat for Humanity built its self-help project in Rancho Santa Margarita, local developers and subcontractors contributed materials identical to those used in nearby market-rate

High-density doesn't mean high-rise. When most people hear high-density housing, they imagine high-rise housing. But in most California cities, the market won't even support high-rise housing. More often than not, high-density development now means two- and three-story wood frame garden apartments that frequently are similar in scale to large home luxury housing.

homes. Thanks to sensitive work by experienced architects, the new townhomes fit in perfectly (see case study). These developments are proof that affordable housing doesn't mean high-rise slums.

Myth #8

High-density and affordable housing increase crime.

Fact #8

The design and use of public spaces has a far more significant affect on crime than density or income levels.

Density does not cause crime. For many years social scientists have asked whether high-density housing causes crime. Not one study has shown any relationship between population or housing density and violent crime rates; once residents' incomes are taken into account, the effect of density on non-violent crime decreases to non-significance.

After studying housing and neighborhoods throughout the country, Oscar Newman concluded that the design and use of public spaces, and

particularly the sense of ownership and control that residents have over these areas, has far more significant affect on crime than density or income levels.

In neighborhoods suffering from disinvestment, particularly those areas lacking jobs and community services, crime can be higher.

Local governments can help address legitimate concerns about crime by working with existing residents and law enforcement to develop community-based strategies to reduce crime.

Management & Design are Key.

Local governments can also help protect the entire community, including new affordable housing residents themselves, by attending to details at the project level. Most important is effective professional onsite management, with strong tenant-screening and good security systems. Design, too, can play an important role in protecting residents and neighbors of high-density or affordable housing, especially by ensuring visibility. New developments should also contain a mix of unit types to accommodate different kinds of households. When residents have different occupations and family types, someone will probably be home in the development almost all the time.

In Conclusion

In this decade, California's persistent affordable housing shortage has become so commonplace that it seems natural. Planners and elected officials must stop believing another pervasive myth: *that they can do nothing to create affordable housing*. This report shows that many California communities now believe they have the creativity, resources, and will to house all those who need shelter. As a result, they have established that, in fact, California communities can become more open, more accepting, and better places for old-timers, new immigrants, or their children.

Case Studies

Renaissance

High-Density and Affordable Housing Help Balance Silicon Valley



High-technology firms create thousands of jobs in Silicon Valley, but housing construction does not keep pace. New workers have to commute long distances to reach their jobs. As a result, Silicon Valley suffers from some of the worst traffic in California and from the State's highest housing prices. In the late 1980s, San Jose set out to clear traffic and ease the housing shortfall by changing its land-use policies. The Renaissance project, on a 56-acre site in north San Jose, was originally designated for research and development. It had enough infrastructure -- including a wide road and convenient access to

planned light rail to handle a large number of new jobs.

In 1991, Renaissance Associates, a partnership between General Atlantic Development and Forest City Development, proposed with the landowners that San Jose rezone the site for over 1,500 moderate -- and high-density rental apartments and for-sale town homes, neighborhood retail, and a day-care center. San Jose readily agreed.

The project developers started work early with neighbors living in an existing single-family development on the site's northern boundary to provide appropriate transitions into Renaissance, while making best use of the large existing road. In response to neighbors' concerns, the developers located the lowest-density town home component adjacent to the existing residences, and provided ample setbacks between the new attached homes & the 1950s-vintage single-family homes.

The developers responded to concerns about traffic by canceling initial plans for a through street that would connect the existing neighborhood with Renaissance Village.

This high-density development shows that often repeated myths about the effects of high-density housing on public services and transportation aren't always true. San Jose's ambitious plans for employment development in the area led the City to require the construction of more infrastructure than was eventually necessary both on the site itself and in neighboring areas of the City. Later, the City determined that it could alleviate traffic throughout its road network by shifting the location of new residences and workplaces.

The composition of the project itself, with over 250 affordable apartments, market-rate apartments, and attached ownership units, further assures balance between the

housing and Silicon Valley's new jobs. The site design, which features pedestrian-friendly walkways and easy connections to the Tasman Light Rail, will allow Renaissance Village residents to leave their cars—in their garages altogether.

The development also shows that, with advance planning and sensitivity to neighbors' concerns, NIMBY sentiments can be prevented. The neighbors and the developers displayed an attitude of openness that ensured both a smooth approval process and a better project.

San Paulo

Good Design Beats NIMBYism in Irvine



The City of Irvine, one of California's largest planned communities, added tens of thousands of new jobs as the information economy boomed. But the City's housing supply—especially housing for families with modest incomes—could not keep up with its job creation. In late 1990s, the City and The Irvine Company, which owns all the undeveloped land in the City, identified a 15-acre multifamily site as appropriate for new affordable housing.

To ensure that such a large and prominent new development would fit into West Park Village, the Irvine neighborhood that surrounds it, The Irvine Company contacted the Costa Mesa-based architecture firm of McLarand Vasquez & Partners (MV&P). MV&P, which had also designed the dense and highly popular Corte Bella town homes across the street from the project site,

designed San Paulo's 382 units in 27 separate buildings, with flats and town homes of various sizes. San Paulo's overall density reaches about 25 units per acre, with room left over for two swimming pools, generous landscaping, a tot lot, and numerous features to smooth the transition from San Paulo's surroundings into its highest-density areas.

To show the City's residents that affordable housing and its residents belong in Irvine, The Irvine Company also met early with West Park Village residents. The neighbors were won over by the open process and the high-quality design. The Irvine Company and the City emphasized that San Paulo's residents would be members of the Irvine community. Teachers, firefighters, and other essential contributors to the City's life previously forced out of the City by its high housing prices would find an affordable place to live if San Paulo were approved.

Also key to the project's success was the participation of its non-profit partner, San Francisco's BRIDGE Housing. BRIDGE provided vital advice on affordable housing to the other members of the development team, assisted in the City's approval process, and coordinated the project's financing, which came from City & county sources and State-authorized bonds and tax credits, with credit enhancement by Sumitomo Bank, Ltd. Forty percent of the units are affordable to families earning less than half of Orange County's median income of \$56,500; another 50 units are also designated as affordable to low- and moderate-income families.

In Irvine, the developer, architect, non-profit partner, and City staff needed to overcome one key obstacle: unfamiliarity. Residents' preconceptions fit the myths—and not the reality—of today's mixed-income, non-profit sponsored affordable housing. By being sensitive to both the design of

surrounding developments and neighboring residents' desires to feel included in decisions, the development team has created a successful model for emulation throughout southern California.

Midtown Sacramento

Residents Play a Role in Creating Affordable Family Housing in Neighborhood



Midtown Sacramento boasts a diverse mix of housing and small businesses. Midtown streets are lined with early 1900 Victorian houses, some of which are occupied by high-income families, others have been converted into multiple rental units and more still are occupied by office-type businesses, primarily law firms.

Building family housing in an established downtown isn't easy, but Mercy Housing California demonstrates that when the lines of communication are opened, a dense multifamily project can gain public support.

Saint Francis of Assisi Elementary School and Church is located in a midtown neighborhood, a block from historic Sutter's Fort

and nearby a number of boutiques interspersed in a largely residential neighborhood. The School and Church occupied over half of a city block and the Church had rights to the entire block. The bishop was interested in developing housing on the underutilized area of the block. One of the famous Victorian houses succumbed to a fire by transients. The Church had the remains removed and was left with an eyesore and potentially hazardous attraction next to the School playground. Although there are high-rises housing elderly residents in the midtown neighborhood, community members and Saint Francis parishioners didn't perceive an affordable multifamily housing project fitting in to the existing residential neighborhood. There was significant opposition to building such a project.

Mercy Housing California enlisted the assistance of Michael Friedman, an experienced in fill development architect with Tong and Bottomly, to conduct a series of workshops to listen to community and parishioner concerns. To build the desired number of family units composed of one-, two-, and three-bedroom units, the architectural firm designed the building from the inside out. Conscientious of local resident concerns, the project saved the School playground while preserving the privacy of the new 46 affordable family housing units. Additionally, local input resulted in new public space for the community to enjoy. The project has been built and occupied for several years and has become an integral part of the midtown neighborhood. Residents and parishioners, who at first feared the project, now point with pride to the community asset they had a hand in creating.

San Diego

Small Scale, Mixed-Income Housing is good fit for Little Italy Neighborhood Development



The sloping landscape at the northern downtown edge of San Diego Bay was once home to the many Italian families who derived a living from the highly successful tuna fishing industry. Although large-scale commercial fishing is now a memory, the district's

southern European character remains. Always a neighborhood first and then a commercial and light industrial center, Little Italy's spirit is perhaps best typified by the rebuilt Washington Elementary School and development of the adjacent Amici Park, which serves both as a playground for the school and a park including a bocce ball court for the community. Its lovely vistas now offer an urban neighborhood with single-family homes, condominiums, lofts and apartments. The India Street commercial strip is alive with Italian restaurants, small cafes, art and graphic studios/galleries, specialty shops and low-rise offices.

Little Italy Neighborhood Development (LIND), one of the region's most innovative residential

ideas, was one of six new successful affordable housing projects that has received the State Housing Director's Award for Housing Development Excellence in 2000. The Little Italy development consists of 16 row homes, 12 affordable rental lofts and 37 low- and moderate-income apartments. This successful development demonstrates that smaller scale, mixed-income housing can be infilled in an urban setting.

Continuing infill for-sale and rental residential projects is further reinforcing little Italy's distinctive character. Property has been acquired recently by the Redevelopment Agency for future housing developments.

What Does Density Look Like?

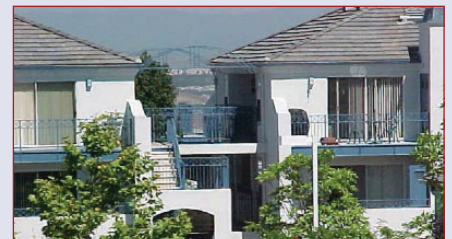
Providing a broad range of housing densities is key to ensuring housing opportunities for all residents. Density is calculated by determining the number of dwelling units per acre (du/ac). But, what do different housing densities look like?



Coggins Square Pleasant Hill, Walnut Creek, CA
42 Units/Acre



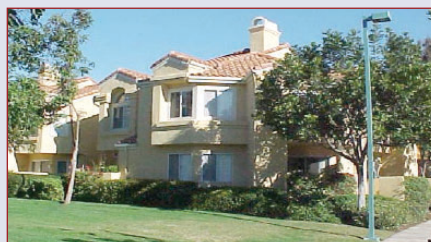
Chesnut Place, Orange, CA
100 Unit/Acre



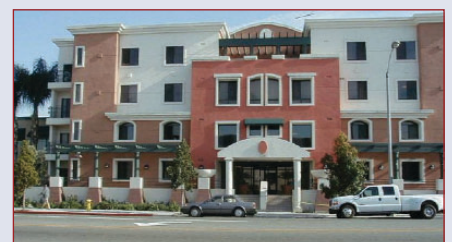
Woodpark Apartments, Aliso Viejo, CA
24 Units/Acre



Casa San Juan, Oxnard, CA
64 Units/Acre of Family Housing



San Marcos Apartments, Irvine, CA
64 Units/Acre



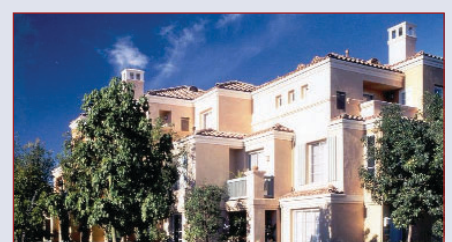
Fullerton City Lights, Fullerton, CA
83 Units/Acre



Russell Manor, Sacramento, CA
66 Units/Acre of Elderly Housing



Arroyo Vista Apartments, Mission Viejo, CA
14 Units/Acre



San Paulo Apartments, Irvine, CA
25 Unit/Acre

Resources

Some communities will need to see more specific examples of good high-density and affordable housing before being convinced that they can live with it. In other cases, residents may need to meet people who live in affordable housing. Almost universally, local governments and planners need advice and information about how best to ensure the design of quality affordable and high-density housing in their communities. Luckily, more and more resources--books, pamphlets, handbooks, slide shows, and videos--are becoming available. This list includes only a few resources; those interested are encouraged to contact the California Department of Housing and Community Development (916/445-4728) for ordering information on most of these publications and for additional suggestions.

Making Housing More Affordable

Blue Print 2001: Housing Element Ideas and Solutions for a Sustainable and Affordable Future, Bay Area Housing, 2001. Blue Print 2001 includes a large directory of housing programs and strategies with a wealth of case studies, including adaptive reuse, air rights development, infill development, second units and density bonus developments.

There Goes the Neighborhood? The Impact of Subsidized Multi-Family Housing on Urban Neighborhoods, by Edward Goetz, Hin Kin Lam and Anne Heitlinger. Center for Urban and Regional Affairs and Neighborhood Planning for Community Revitalization, Minneapolis, Minnesota, 1996

Affordable Housing Slide Show. This 1989 slide show, also from LHEAP, focuses on the San Francisco Bay Area, on techniques for achieving housing affordability; available on loan from HCD for the cost of mailing plus a deposit. For more information, call HCD at 916/445-4728.

Affordable Housing Handbook. A 1991 publication of the California Coalition for Rural Housing. This handbook offers an exhaustive list of programs and policies that local governments can use to ensure the construction, rehabilitation, and preservation of affordable housing. \$5.00 To order, call CCRH at 916/443-4448.

Creating a Local Advisory Commission on Regulatory Barriers to Affordable Housing. This 1992 publication by the US Department of Housing and Urban Development guides local governments that want to establish committees to identify and reform ordinances and policies that reduce the supply of housing and increase its costs. \$4. To order, call HUD User at 800/245-2691.

Affordable Housing: Proactive & Reactive Planning Strategies. This recent publication discusses both "affirmative" measures such as, inclusionary zoning, linkage, affordable housing finance, affordable housing preservation, and infill-and reactive measures, including

zoning and subdivision reform, growth management, impact fees, environmental legislation, and administrative reform. \$29 includes shipping and handling. To order, call the Planners' Bookstore at 312/955-9100.

Affordable Housing: Restoring the Dream. 15-minute video (1989) by the Urban Land Institute promotes cost savings in single-family housing through flexible development standards and expedited processing. \$34.95 for non-ULI members. Order number A-17. To order, call 800/321-5011.

The Effects of Subsidized and Affordable Housing on Property Values: A Survey of Research. Out of 15 published papers on subsidized housing, group homes for the handicapped, and manufactured housing, 14 concluded that this housing had no significant negative effects on the values of neighboring properties. Some reported positive property value effects. Free. To order, call HCD at 916/445-4728.

Second Units. This paper, updated to reflect 1990 amendments to State law increasing the permissible size of second units, describes the advantages of and statutory requirements for the development of second units. Free. To order, call HCD at 916/445-4728.

Meeting the Residents of Affordable Housing

California Homeless and Housing Coalition: A 42-minute video, *Neighbors in Need*, documents the experiences of three organizations in establishing facilities for the homeless. The 1991 video features interviews with residents and clients, as well as with one-skeptical neighbor who now advocate for other similar facilities, in Hayward, San Mateo County, and Los Angeles. \$15. To order, call 916/447-0390.

Realize the Dream. The City of Fremont Housing Department produced a five-minute video, now available through HCD introducing decision-makers and citizens to the residents of three of the City's bond-financed mixed-income apartment projects. Features interviews with residents of both subsidized and unsubsidized units. For information on how to obtain, call HCD at 916/445-4728.

We Call It Home: A Tour of Affordable Housing. 16-minutes. Recent video produced by Marin County's Ecumenical Association for Housing (EAH) introduces several of EAH's projects and the people who live there, in Marin and Contra Costa counties. \$15 to purchase, postage costs to borrow. Call Betty Pagett at 415/258-1800.

NIMBY fears, community perceptions: Analysis of Affordable and Market Rate Housing Developments in Oakland, California, by Cathy Cha. Dept. of City and Regional Planning, University of California at Berkeley, 1996

HCD offers a website with a section titled: NIMBY Resources at www.hcd.ca.gov/hpd/nimby. The page includes resources and tools for addressing NIMBY concerns about housing

and especially affordable housing and/or high-density housing.

Increasing Housing Densities in New and Existing Development

Good Neighbors: Affordable Family Housing (Design for Living) by Tom Jones, William Pettus (Contributor), Michael Pyatok, and R. Thomas Jones. 1996. McGraw-Hill Professional Publishing. Based on the acclaimed AIA Design for Housing initiative and supported by and NEA grant. This is an authoritative guide to modern affordable housing design. This landmark book provides architects, landscape architects, planners, developers, advocates, government officials, and policy makers with workable answers for the design of affordable, aesthetically pleasing housing.

Density by Design: New Directions in Residential Development by Steven D. Fader, Vincent Scully. 137 pages 2nd edition, March 15, 2000, Urban Land Institute (ULI). This document provides innovative solutions to the challenge of developing higher density housing that will be successful in the marketplace. Case studies of 14 projects show how others have implemented the best new ideas in residential development and design. Projects covered range in density from single-family subdivisions to downtown high-rise apartments and illustrate many up-to-the minute concepts: new urbanism, transit-oriented development, mixed-income and mixed-housing types, urban infill, and adaptive use. They also reveal trends and standards for developing projects that provide a sense of place, use land efficiently without compromising livability, and that can pass the twin tests of governmental approval and marketability.

Compact Development Presentation. This presentation with 39 slides from the Local Government Commission highlights some of the needs, myths and misconceptions about compact housing and its role in helping to create more livable communities. Slide shows may be purchased or rented. \$50.00 for complete set, \$2.50 for individual slides, or rent for \$15.00 plus \$50.00 deposit.

Multifamily Residential Design Principles. The City of Sacramento published this excellent guidebook November 19, 1999 to provide multifamily design guidelines for the City Planning Commission.

Big Blue Book of Affordable Housing Case Studies, Alexander and Edwards Publishing, 2000 Compact and Balanced Development: Designs for California Living. This 15-minute video by the American Institute of Architects California Council provides tangible examples of infill and higher-density developments that enjoy community support, and highlights the role of local governments in their approval and construction. AIA members: \$25; non-members: \$40. To order, call 916/448-9082. In late 1993, the AIACC will release a follow-up urban design video demonstrating how to respond to community concerns, increase density, encourage mixed-use transit-oriented development, and obtain innovative financing.

Room Enough. This publication, by San Francisco's Greenbelt Alliance, discusses five strategies using vacant land more effectively, building more housing along major streets, bringing homes and people downtown, adding second units on existing home sites, and recycling lands no longer needed for industry that communities can use to accommodate more housing while meeting concerns about community character and open space. \$9. To order, call Greenbelt Alliance at 415/543-4291.

Transit-Oriented, Mixed-Use and Infill Development

Building Livable Communities: A Policymaker's Guide to Infill Development. The January 2001 publication from the Local Government Commission helps to answer two of a policymaker's most frequently asked questions: "Why build in town?" and "What can local government do to encourage infill development?" This guidebook suggests a number of ways to create infill development in your community. These include: planning proactively; assuring public participation; using public facilities and development to attract investment; assisting with project financing; zoning for mixed-use and higher-density development; encouraging rehabilitation; providing in-kind assistance; streamlining the permit process; providing public services; and addressing toxic contamination.

Building Livable Communities: A Policymaker's Guide to Transit-Oriented Development. This is a companion guidebook on transit-oriented development from the Local Government Commission. More and more, community leaders are recognizing that building residences, stores and work places near transit stops can play a major role in creating places where we enjoy living, working and playing. The guidebook addresses the questions of "why build near transit?" and "why should elected officials, land-use agencies and developers pay more attention to development near transit than to any other kind of development?" The guidebook has helpful advice, model examples, and resources to help create livable, transit-oriented communities in your region.

Notes

¹Statewide Housing Plan: Raising the Roof, California Housing Development Projections and Constraints 1997-2020, California Department of Housing and Community Development, May 2000

²Still Locked Out: New Data Confirm that California's Housing Affordability Crisis Continues, California Budget Project, March 2001

³American Housing Survey

⁴John Holtzclaw, 1997m Metropolitan Transportation Commission, 1990 Household Travel Survey

⁵Cambridge Systematics and Parsons Brinckerhoff Quade & Douglas. Making the Land Use Transportation Air Quality Connection: Analysis of Alternatives. Vol. 5 Friends of Oregon

⁶American Housing Survey, 1999; National Multi Housing Council, Research Notes, August 24, 2000

⁷Paul Cummings and John Landis, "Relationships between Affordable Housing Developments and Neighboring Property Values" (Berkeley: University of California Institute of Urban & Regional Development, 1993)

⁸California Department of Housing and Community Development, "The Effects of Subsidized and Affordable Housing on Property Values: A Survey of Research" (Sacramento: DHCD, 1988), 2

Published by the California Planning Roundtable

The California Planning Roundtable is an organization of experienced planning professionals who are members of the American Planning Association. Membership is balanced between the public and private sectors, and between Northern and Southern California. The mission of the Roundtable is to promote creativity and excellence in planning by providing leadership in addressing important, unresolved planning issues in California.

Members of the California Planning Roundtable, May 2002:

Jeff Carpenter

AICP, Community Redevelopment Agency, City of Los Angeles

Elaine Costello

AICP, City of Mountain View

Paul C. Crawford

FAICP, Crawford Multari & Clark Associates, San Luis Obispo

Cathy E. Creswell

Calif Dept. Housing and Community Development

Linda C. Dalton

PhD, AICP, California Polytechnic State University, San Luis Obispo

Susan A. DeSantis

IBI Group, Irvine

Michael Dyett

AICP, Dyett and Bhatia, San Francisco

David Early

Design, Community & Environment, Berkeley

Janet Fairbanks

AICP, San Diego Association of Governments, San Diego

Joanne Freilich

AICP, UCLA Extension Public Policy Program, Los Angeles

Wayne Goldberg

AICP, City of Santa Rosa

Al Herson

FAICP, SAIC, Sacramento

Sharon Hightower

Hightower/Associates, Claremont

Stan Hoffman

FAICP, Stanley R. Hoffman Associates, Los Angeles

M. Thomas Jacobson

JD, AICP, Sonoma State University

Vivian Kahn

FAICP, Kahn/Mortimer/Associates, Oakland

Sandra Massa-Lavitt

Palm Desert

Mike McCoy

University of California, Davis

Michael Moore

City of Petaluma

John W. McKenna

San Clemente

Roberta Mundie

AICP, Mundie & Associates, San Francisco

Steve Preston

FAICP, City of San Gabriel

Marvin D. Roos

AICP, Mainiero, Smith and Associates, Palm Springs

Janet Ruggiero

FAICP, City of Citrus Heights

David Salazar

AICP, Claremont Graduate University

R. Ann Siracusa

AICP, Santee

Richard B. Stephens

The AEI-CASC Companies, Colton

Susan Stoddard, PhD

FAICP, InfoUse, Berkeley

Woodie Tescher

EIP Associates, Los Angeles

Frank Wein

FAICP, DPDS, URS Corporation, Los Angeles

Mark Winogrand

AICP, City of Culver City

Project Team

Project Manager:
Susan DeSantis

California Planning Roundtable project team:

David Early
Wayne Goldberg
Vivian Kahn
Marvin Roos
Janet Ruggiero

California Department of Housing & Community Development project team:

Cathy Creswell
Paul McDougall
Paul Dirksen

Report Design and Production:
Pierre Rademaker Design
www.rademakerdesign.com

Cover Rendering © 2002 :
Elizabeth Moule & Stefanos Polyzoides
Architects and Urbanists
Pasadena, CA

